



GMT MONTHLY MEMBERSHIP PROGRESS REPORT

Results as of: 2/29/2020

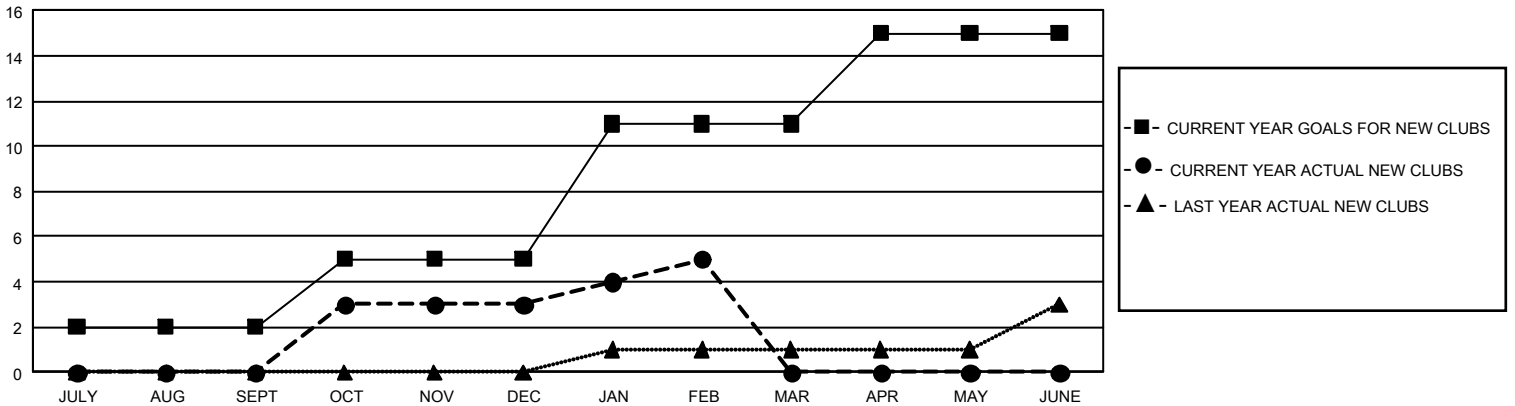
GMT Constitutional Area 1, Group K

GMT: OPEN

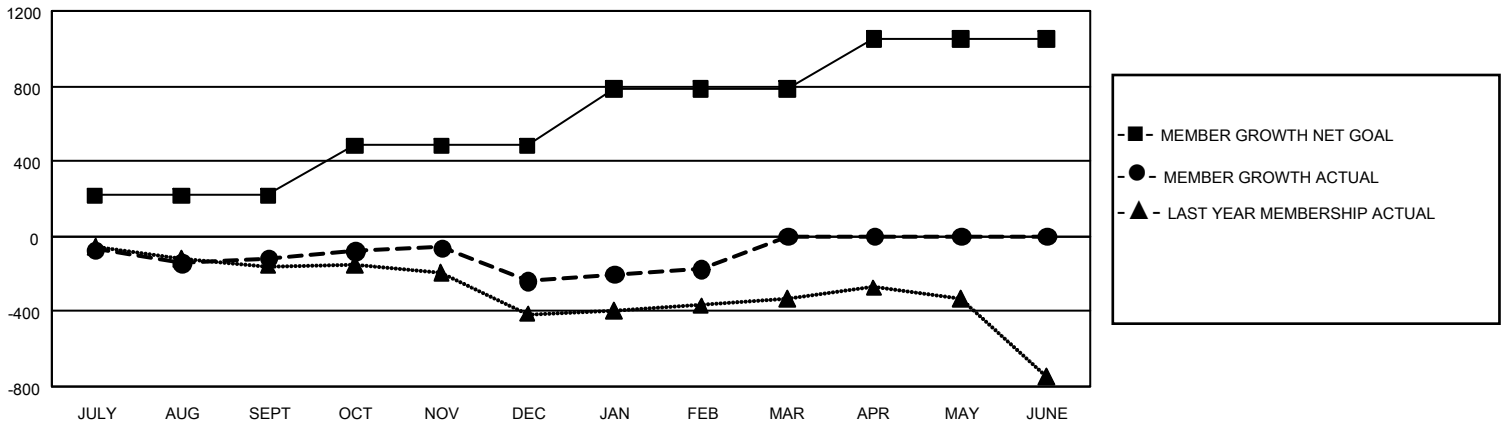
REPORT DOES NOT INCLUDE CLUBS IN UNDISTRICTED AREAS.

Clubs				Members			
RESULTS FOR 2019-2020				RESULTS FOR 2019-2020			
QUARTER	NEW CLUB GOAL	NEW CLUBS	DROPPED CLUBS	QUARTER	MEMBER GROWTH NET GOAL	MEMBER GROWTH ACTUAL	DROPPED MEMBERS ACTUAL (including transfers)
JULY/AUG/SEPT	6	0	5	JULY/AUG/SEPT	645	303	369
OCT/NOV/DEC	9	3	3	OCT/NOV/DEC	798	451	554
JAN/FEB/MAR	18	2	2	JAN/FEB/MAR	918	357	277
APR/MAY/JUNE	12	0	0	APR/MAY/JUNE	792	0	0

GOALS AND ACTUAL NEW CLUBS CUMULATIVE



GOALS AND ACTUAL MEMBERS CUMULATIVE



DROPPED CLUBS: 10	318 CLUBS OF 599 ADDED 1 OR MORE NEW MEMBERS	<u>GENDER DISTRIBUTION</u> MALE 11,779 (64.40%) FEMALE 6,512 (35.60%)
<u>DROPPED MEMBERS</u> DECEASED 159 CLUB CANCELLED 36 OTHER 1,005 <hr/> TOTAL 1,200	CLICK HERE FOR CUMULATIVE MEMBERSHIP DATA	TOTAL FAMILY UNIT MEMBERS 3,524 FAMILY MEMBERS PAYING HALF DUES 1,807